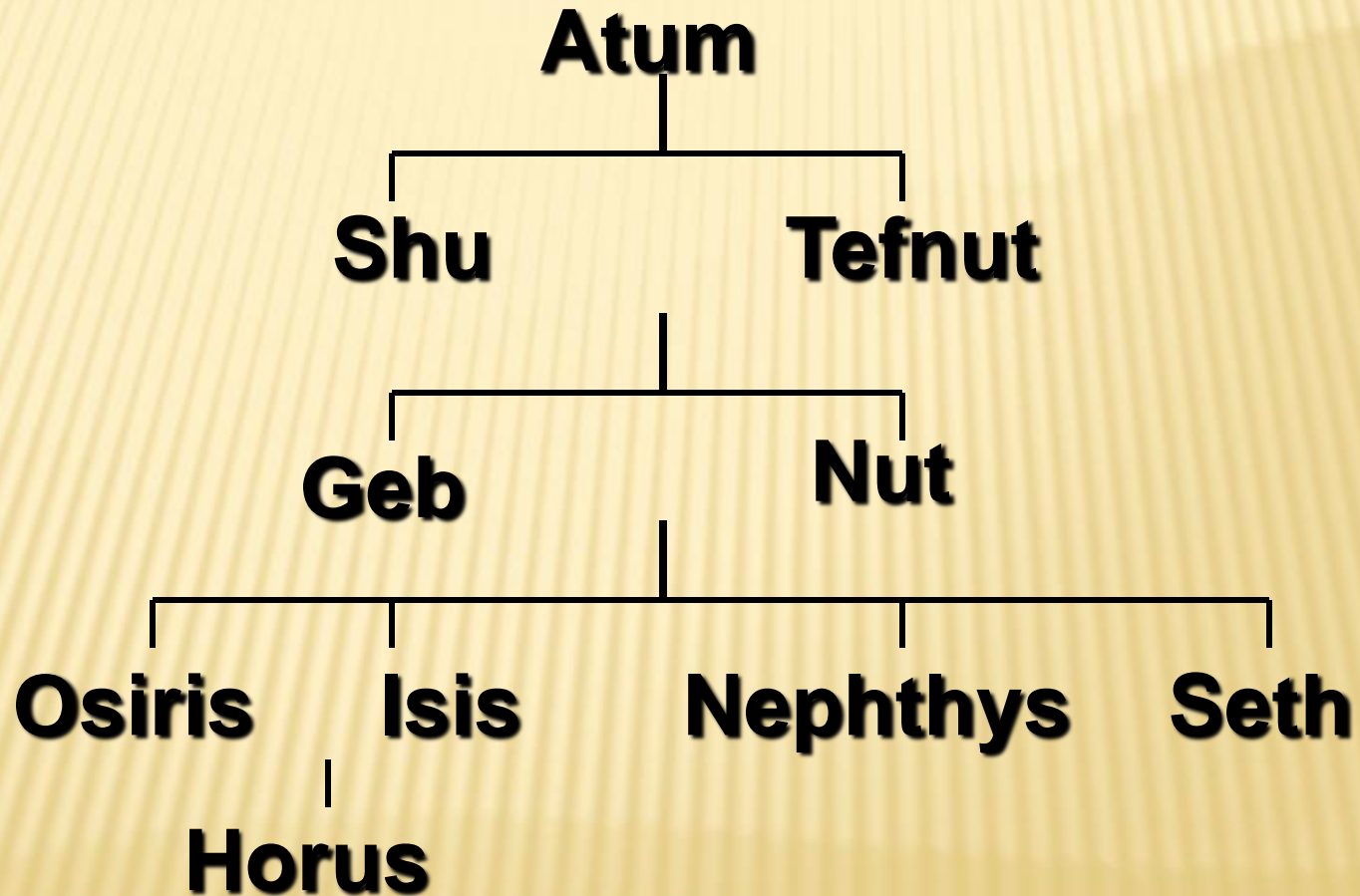


OSIRIS, ISIS, AND HORUS: KINGSHIP, LIFE AND DEATH

LEARNING OBJECTIVES

- ✘ Understand the importance of the Ennead in Egyptian Religion
- ✘ Understand the Osiris myth and the roles of Osiris, Isis, Seth and Horus
- ✘ Understand the importance of Horus to Egyptian Kingship
- ✘ Understand the importance of Isis and Horus in Egyptian medicine magic
- ✘ Understand the importance of Osiris to the Egyptian Afterlife

ENNEAD OF HELIOPOLIS



OSIRIS MYTH

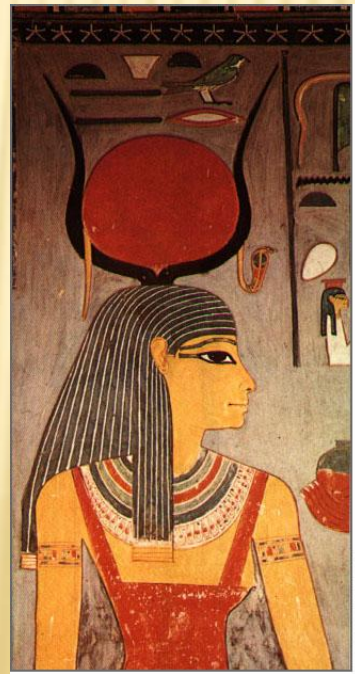
- ✘ Pausanias 2nd Century AD – First full account
- ✘ All elements found in Pyramid Texts
 - + Magic spells for deceased kings



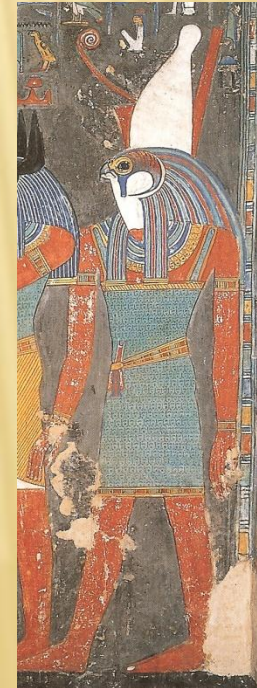
Osiris



Seth



Isis



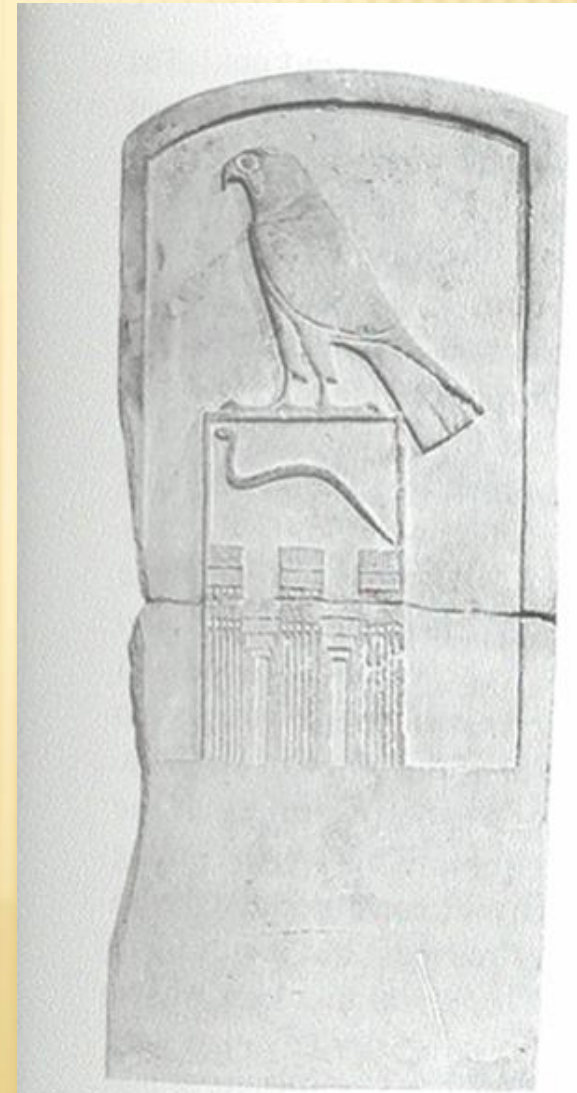
Horus

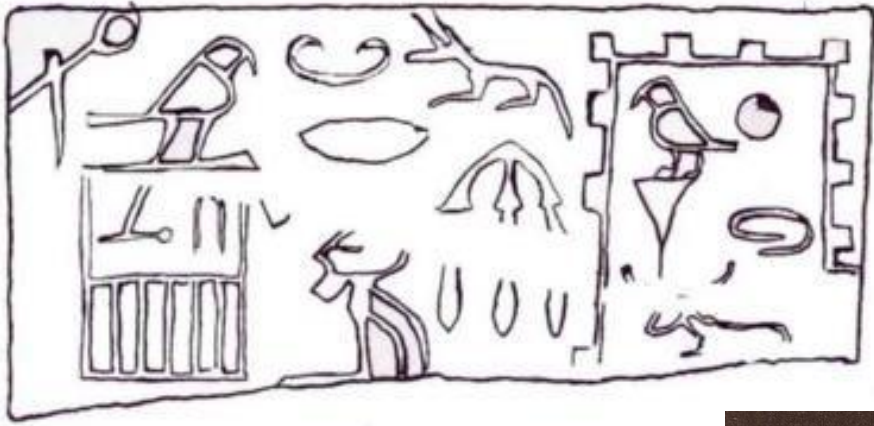
OSIRIS MYTH

- × Osiris King on Earth
- × Brother Seth becomes jealous
 - + Prepares a coffin (a prize to the one who fits in it)
 - + Seals Osiris in the coffin – thrown into the Nile
- × Isis find Osiris in Byblos – brings his body back to Egypt
 - + Isis gives birth to Horus
- × Seth finds body and tears it apart
- × Isis and her sister Nephthys put his body back together and Isis revivifies it
- × Osiris becomes king of the Afterlife
- × Horus contends with Seth and become the king of Egypt – Seth rules over the deserts

HORUS THE LIVING KING

- ✘ Horus Name appears with first kings
- ✘ *Serekh* – Palace Facade
- ✘ Name Of King





INDIVIDUALS HAD SEVERAL ASPECTS

Body

Ka

Ba

Name

Shadow

ROYAL KA

- ✘ Divine Aspect Of The King
- ✘ Passed From King To King
 - + Legitimacy As Horus And As Son Of Re
- ✘ Born With The King
- ✘ King Only Becomes Divine When He Merges With The Royal Ka

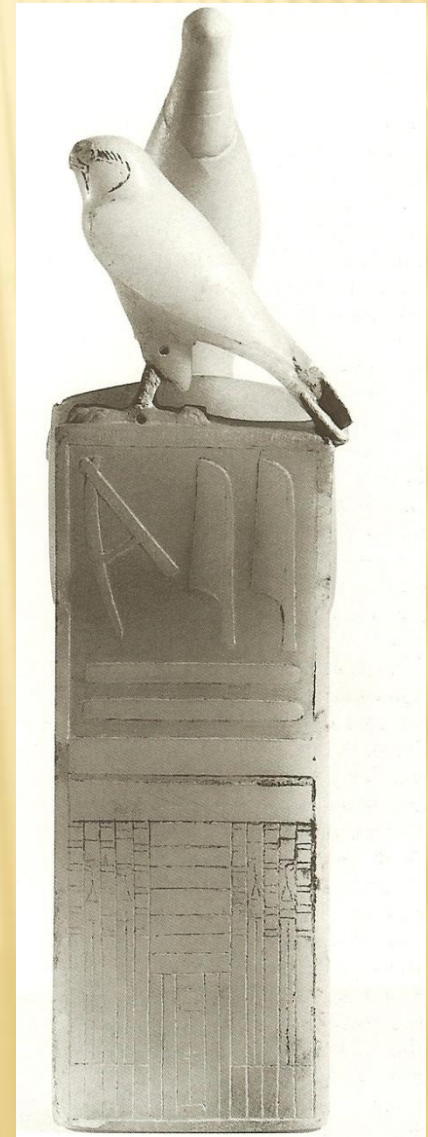
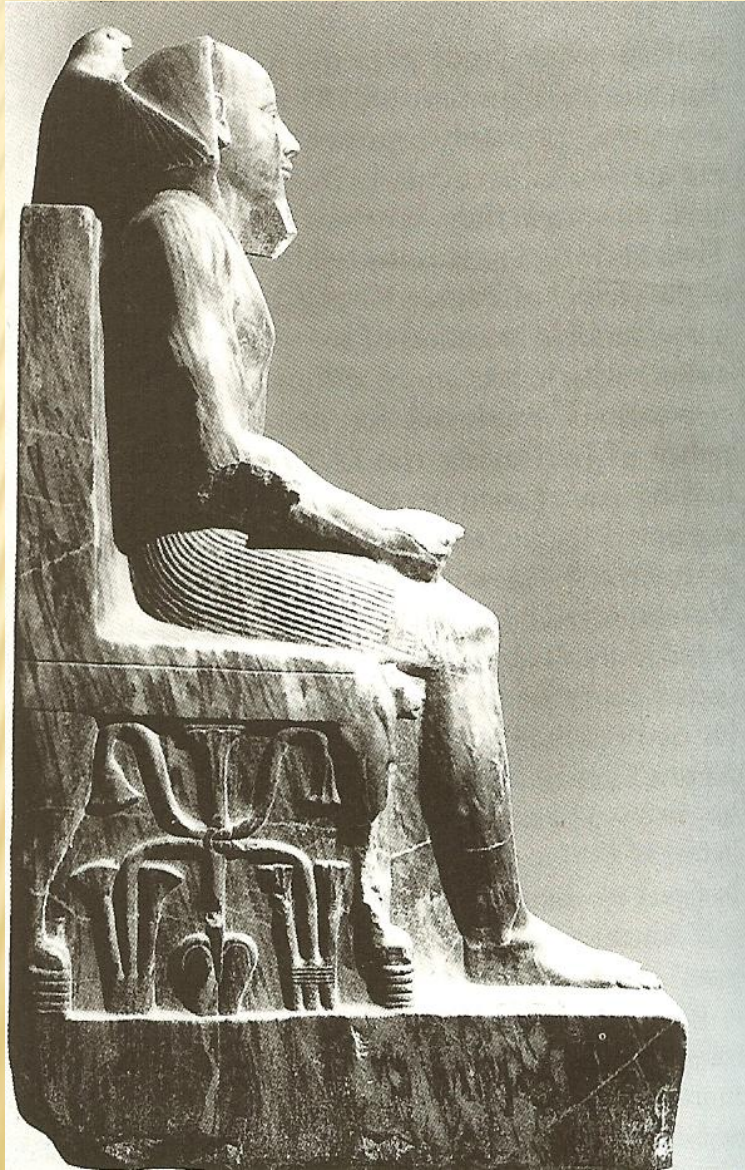
ROYAL KA

Mamdouh Eldamaty's
Theory

+ Horus Was The Royal
Ka



KHAFRE AND PEPI I



ENNEAD OF HELIOPOLIS & OSIRIS

- ✘ Seth - conflict
- ✘ Explains how Horus came into the world
- ✘ Shows where he is in the cosmic order
 - + Legitimizes the state
 - + Legitimizes the succession of kings – deceased king equated with Osiris and his heir with Horus
 - + Provides the king's divinity facilitating his communication with the gods

ISIS'S MAGIC RESTORES OSIRIS



Yahia, D. Mohammed. *Abydos*

ISIS & HORUS IN MEDICAL MAGIC

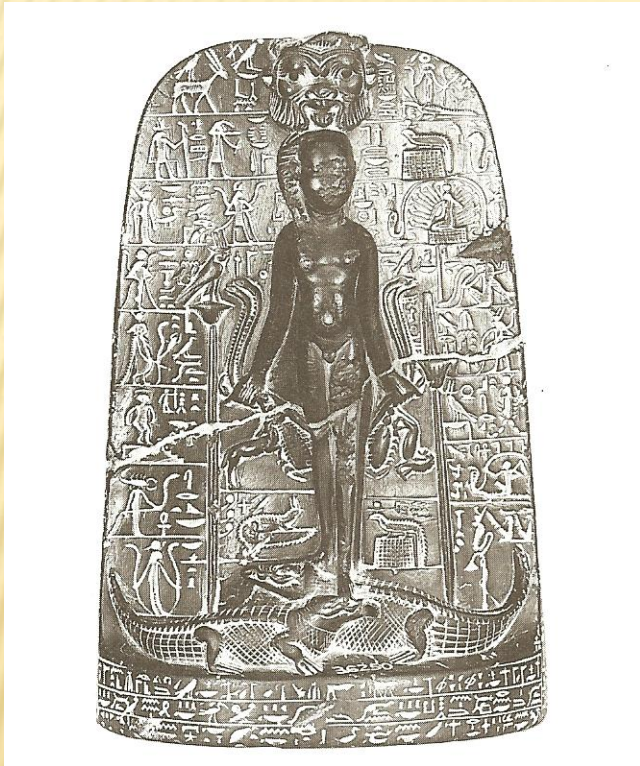
- ✘ Isis ideal deity to be invoked in medical magic
 - + Her exceptional care of her child
 - + Her own magical skills
- ✘ Isis had special powers
 - + Ward off evil
 - + Repair the damage caused by malign influences

ISIS AND HORUS IN MEDICAL MAGIC

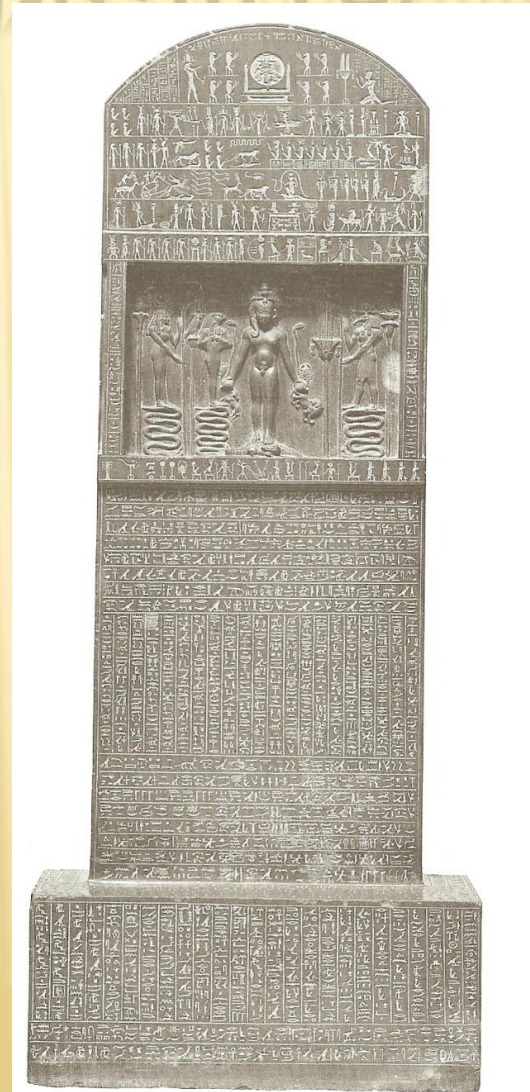
- ✘ The patient must be identified with a god – Horus
- ✘ The healer often invokes Isis using mythic narrative
 - + Isis and the Scorpions
 - + Horus Bitten by Scorpion
 - ✘ Isis halts the solar barque
 - ✘ Thoth sent to help Horus



CIPPI/CIPPUS – STATUES AND STELAE



Nunn, John F. *Ancient Egyptian Medicine*
Fig. 5.7



Nunn, John F. *Ancient Egyptian Medicine*
Fig. 5.8

OSIRIS AND THE DECEASED

- ✘ Old Kingdom Pyramid Texts
 - + Deceased King equated with Osiris
 - + Travels to the circumpolar stars
- ✘ Middle Kingdom Coffin Texts
 - + Deceased elites equated with Osiris
- ✘ New Kingdom “Book of the Dead” (*Book of Coming Forth by Day*)
 - + All deceased equated with Osiris

LEARNING OBJECTIVES

- ✘ Understand the importance of the Ennead in Egyptian Religion
- ✘ Understand the Osiris myth and the roles of Osiris, Isis, Seth and Horus
- ✘ Understand the importance of Horus to Egyptian Kingship
- ✘ Understand the importance of Isis and Horus in Egyptian medicine magic
- ✘ Understand the importance of Osiris to the Egyptian Afterlife